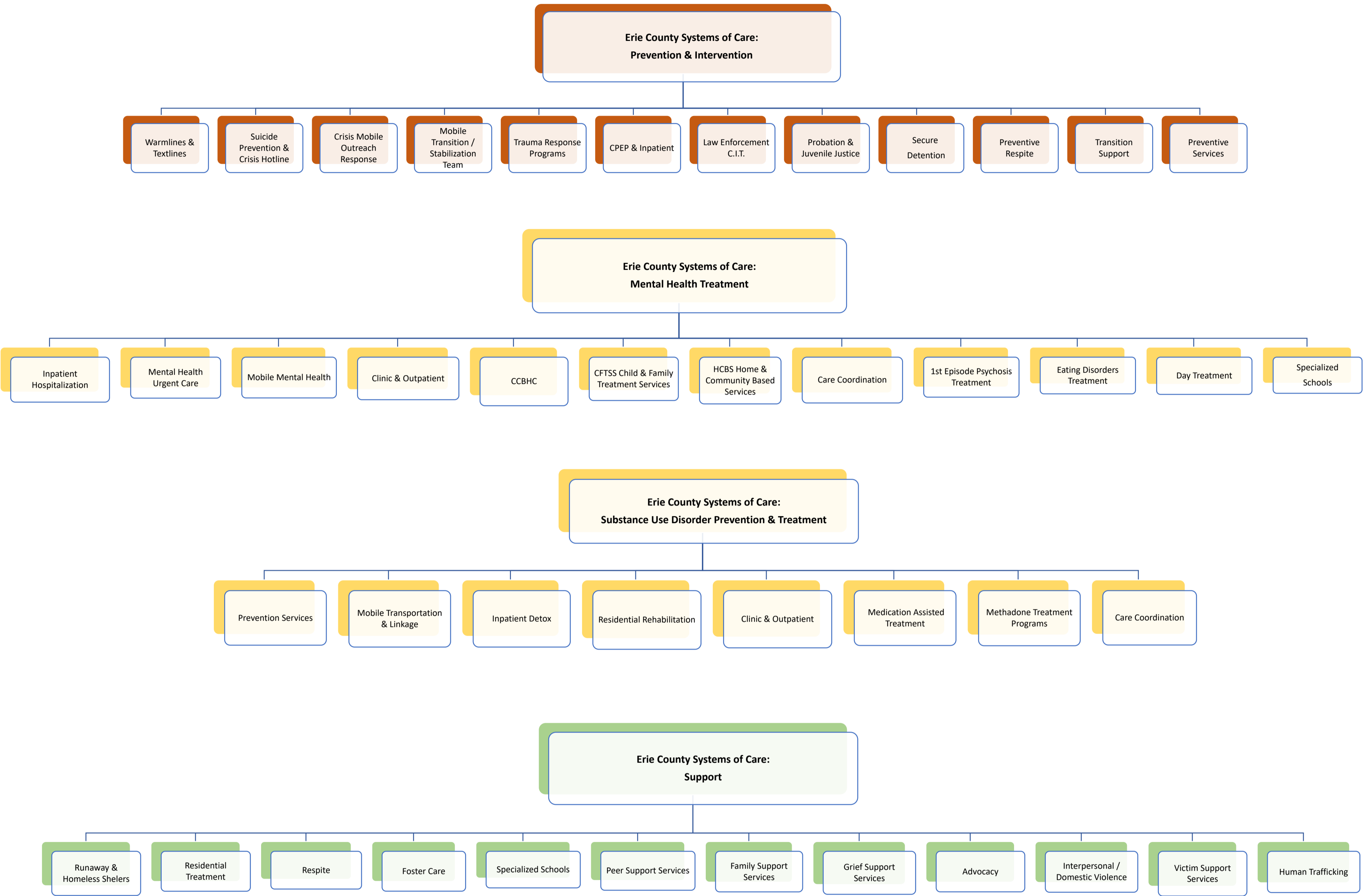


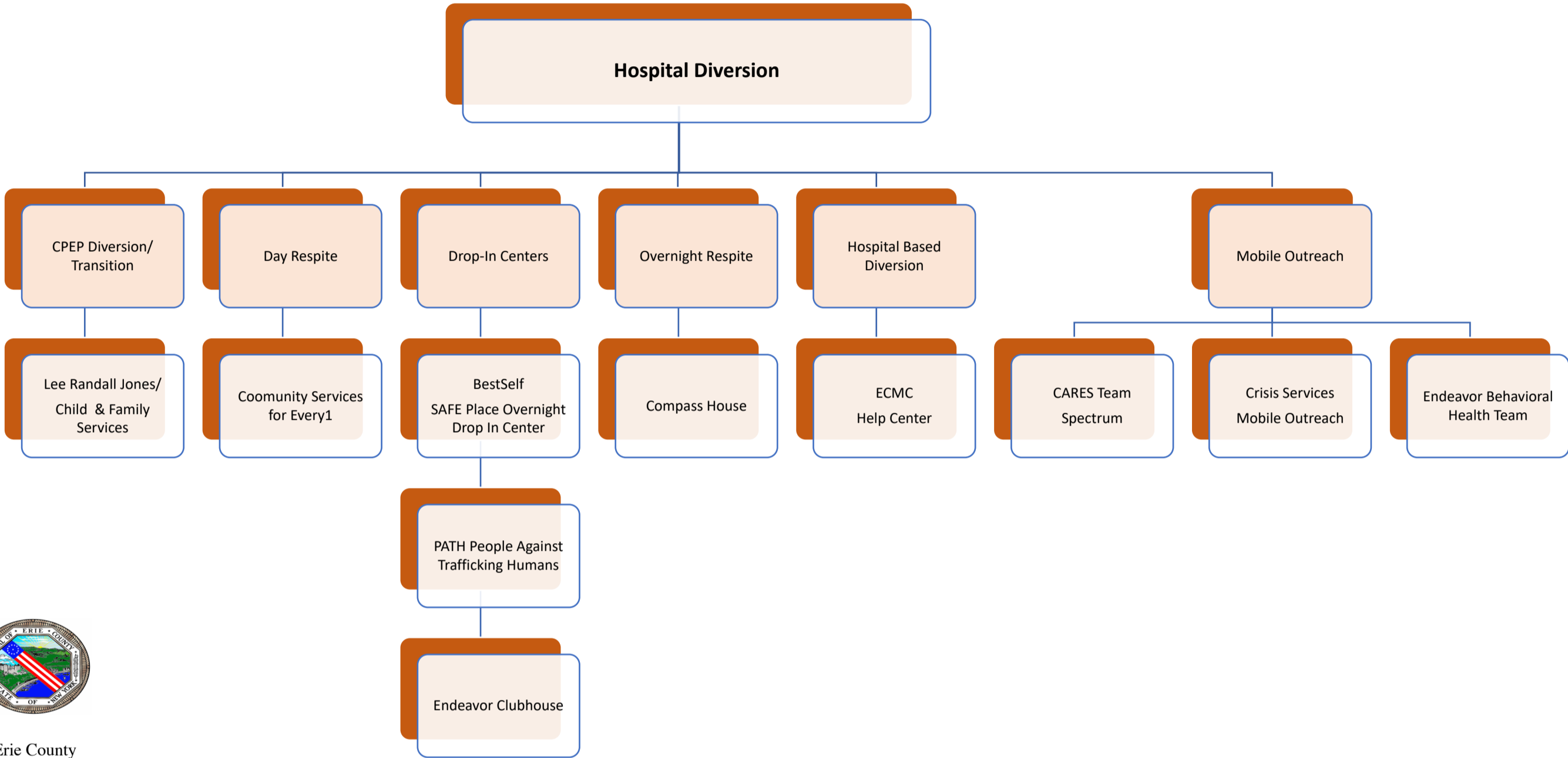
Agency Directory

Agency Name	Website Link
211	<a href="http://www.211wny.org/">http://www.211wny.org/</a>
716 Ministries	<a href="http://www.716Ministries.org">www.716Ministries.org</a>
Al-Anon	<a href="https://al-anon.org/">https://al-anon.org/</a>
Alba Da Vida: Hispanics United of Buffalo (HUB)	<a href="http://hubwny.org/">http://hubwny.org/</a>
Alcoholics Anonymous (AA) in WNY	<a href="https://buffaloaany.org/">https://buffaloaany.org/</a>
Amherst Youth Bureau	<a href="http://www.amherst.ny.us/content/bandc.php?board_id=brds_32">http://www.amherst.ny.us/content/bandc.php?board_id=brds_32</a>
ARC of Erie County	<a href="https://www.arceriecounty.org/">https://www.arceriecounty.org/</a>
Back to Basics Ministry	<a href="https://www.facebook.com/backtobasics716/?rf=526825100832578">https://www.facebook.com/backtobasics716/?rf=526825100832578</a>
Be a Friend (Big Brothers - Big Sisters)	<a href="https://www.beafriend.org/">https://www.beafriend.org/</a>
Beacon Center	<a href="https://www.beaconcenter.net/">https://www.beaconcenter.net/</a>
BestSelf Behavioral Health	<a href="http://www.bestselfwny.org">www.bestselfwny.org</a>
BestSelf Behavioral Health - Lighthouse	<a href="https://www.bestselfwny.org/programs-and-services/the-lighthouse/">https://www.bestselfwny.org/programs-and-services/the-lighthouse/</a>
BestSelf Behavioral Health Safe Space Drop In Center	<a href="http://www.211wny.org/provider/10906/">http://www.211wny.org/provider/10906/</a>
BryLin Behavioral Health System	<a href="http://www.brylin.com">www.brylin.com</a>
Buffalo General Medical Center	<a href="https://www.kaleidahealth.org/bgmc/services/display.asp?s=328">https://www.kaleidahealth.org/bgmc/services/display.asp?s=328</a>
Buffalo Peacemakers	<a href="https://www.facebook.com/buffalopeacemaker/">https://www.facebook.com/buffalopeacemaker/</a>
Buffalo Urban League	<a href="https://www.buffalourbanleague.org/">https://www.buffalourbanleague.org/</a>
CARES Crisis and Restabilization Emergency Services (Spectrum)	<a href="https://www.shswny.org/services/cares">https://www.shswny.org/services/cares</a>
Catholic Charities	<a href="https://www.ccwny.org/">https://www.ccwny.org/</a>
Catholic Diocese	<a href="https://www.buffalodiocese.org/">https://www.buffalodiocese.org/</a>
Catholic Health	<a href="https://www.chsbuffalo.org/">https://www.chsbuffalo.org/</a>
Child Advocacy Center	<a href="http://www.bestselfwny.org">www.bestselfwny.org</a>
Child & Family Services of Buffalo	<a href="https://cfsbny.org/">https://cfsbny.org/</a>
Circle of Daughters	<a href="http://www.211wny.org/provider/2406/">http://www.211wny.org/provider/2406/</a>
Clarence Youth Bureau	<a href="https://www2.erie.gov/clarence/index.php?q=youth-bureau">https://www2.erie.gov/clarence/index.php?q=youth-bureau</a>
Co-Dependents Anonymous	<a href="http://www.211wny.org/provider/3647/">http://www.211wny.org/provider/3647/</a>
Community Action Organization (CAO) - DART Clinic	<a href="https://caowny.org/drug-abuse-research-treatment-dart/">https://caowny.org/drug-abuse-research-treatment-dart/</a>
Community Health Center of Buffalo	<a href="https://chcb.net/">https://chcb.net/</a>
Community Services for Every1	<a href="https://www.csevery1.com/">https://www.csevery1.com/</a>
Compeer	<a href="http://www.compeerbuffalo.org">www.compeerbuffalo.org</a>
Cradle Beach	<a href="http://www.CradleBeach.org">www.CradleBeach.org</a>
Crisis Intervention Team (CIT) Trained Police Officers	<a href="http://crisiservices.org/police-mental-health/#cit">http://crisiservices.org/police-mental-health/#cit</a>
Crisis Services	<a href="http://www.crisiservices.org">www.crisiservices.org</a>
Crisis Services - Addictions Hotline	<a href="http://www.crisiservices.org">www.crisiservices.org</a>
Crisis Services - Advocate Program	<a href="http://www.crisiservices.org">www.crisiservices.org</a>
Crisis Services - Mobile Outreach	<a href="http://www.crisiservices.org">www.crisiservices.org</a>
District Attorney BE SAFE Victim Advocacy Program	<a href="https://www2.erie.gov/da/index.php?q=domestic-violence-advocacy">https://www2.erie.gov/da/index.php?q=domestic-violence-advocacy</a>
EPIC Every Person Influences Children	<a href="https://www.epicforchildren.org/">https://www.epicforchildren.org/</a>
Erie County Dept of Probation	<a href="https://www2.erie.gov/probation/">https://www2.erie.gov/probation/</a>
Erie County Dept of Social Services (ECDSS) Emergency Shelters	<a href="https://www2.erie.gov/health/index.php?q=housing-assistancehomeless-shelters">https://www2.erie.gov/health/index.php?q=housing-assistancehomeless-shelters</a>
District Attorney BE SAFE Victim Advocacy Program	<a href="https://www2.erie.gov/da/index.php?q=domestic-violence-advocacy">https://www2.erie.gov/da/index.php?q=domestic-violence-advocacy</a>
District Attorney Victim/Witness Services Bureau	<a href="https://www2.erie.gov/da/index.php?q=victimwitness-services">https://www2.erie.gov/da/index.php?q=victimwitness-services</a>
Erie County Domestic Violence Hotline	<a href="https://www2.erie.gov/socialservices/domestic-violence">https://www2.erie.gov/socialservices/domestic-violence</a>
Erie County Medical Center (ECMC)	<a href="https://www.ecmc.edu/">https://www.ecmc.edu/</a>
Erie County Medical Center - Help Center	<a href="http://www.ecmc.edu/health-services-and-doctors/behavioral-health/outpatient-behavioral-health-services/help-center/">http://www.ecmc.edu/health-services-and-doctors/behavioral-health/outpatient-behavioral-health-services/help-center/</a>
Erie County Medical Center - Comprehensive Psychiatric Emergency Program (CPEP)	<a href="https://www.ecmc.edu/health-services-and-doctors/behavioral-health/cpep-comprehensive-psychiatric-emergency-program/">https://www.ecmc.edu/health-services-and-doctors/behavioral-health/cpep-comprehensive-psychiatric-emergency-program/</a>
Erie County Medical Center - Outpatient	<a href="https://www.ecmc.edu/health-services-and-doctors/behavioral-health/outpatient-behavioral-health-services/">https://www.ecmc.edu/health-services-and-doctors/behavioral-health/outpatient-behavioral-health-services/</a>
Erie County Medical Center - Outpatient Substance Use Treatment Services	<a href="https://www.ecmc.edu/health-services-and-doctors/behavioral-health/outpatient-substance-use-treatment-services/">https://www.ecmc.edu/health-services-and-doctors/behavioral-health/outpatient-substance-use-treatment-services/</a>
Erie County Sheriffs Domestic Violence (DV) Unit	<a href="https://www2.erie.gov/sheriff/index.php?q=erie-county-sheriff039s-office-domestic-violence-unit">https://www2.erie.gov/sheriff/index.php?q=erie-county-sheriff039s-office-domestic-violence-unit</a>
Erie County Youth Bureau	<a href="https://www2.erie.gov/youthservices/index.php?q=youth-bureau">https://www2.erie.gov/youthservices/index.php?q=youth-bureau</a>
Endeavor Behavioral Health Co-Responder Teams	<a href="http://www.ehsny.org">www.ehsny.org</a>
Endeavor Health Services	<a href="http://www.ehsny.org">www.ehsny.org</a>
Envision Wellness WNY	<a href="https://www.envisionwellnesswny.com/">https://www.envisionwellnesswny.com/</a>
Evergreen Health	<a href="https://www.evergreenhs.org/behavioral-health-services/mental-health-services/">https://www.evergreenhs.org/behavioral-health-services/mental-health-services/</a>
Family Help Center	<a href="http://familyhelpcenter.net/">http://familyhelpcenter.net/</a>
Family Justice Center	<a href="https://www.fjcsafe.org/">https://www.fjcsafe.org/</a>
Family Keys Program (Southwest Keys)	<a href="https://southwestkey.org/youth-family-services/">https://southwestkey.org/youth-family-services/</a>
Family Promise	<a href="https://fpwny.org/">https://fpwny.org/</a>
First Trinity Lutheran Church	<a href="https://firsttrinity.com/">https://firsttrinity.com/</a>
Food Addicts in Recovery	<a href="https://www.foodaddicts.org/">https://www.foodaddicts.org/</a>
Gamblers Anonymous (GA)	<a href="http://www.gamblersanonymous.org/ga/">http://www.gamblersanonymous.org/ga/</a>
GLYS WNY	<a href="http://glyswny.org">glyswny.org</a>
Gateway-Longview	<a href="https://www.gateway-longview.org/">https://www.gateway-longview.org/</a>
Greater Buffalo United Accountable Health Network (GBUAHN)	<a href="https://www.gbuahn.org/">https://www.gbuahn.org/</a>
Hamburg Youth Bureau	<a href="https://www.townofhamburgny.com/youth-bureauyes/">https://www.townofhamburgny.com/youth-bureauyes/</a>
Harbor House	<a href="https://rsiwny.org/what-we-do/harbor-house-resource-center.html">https://rsiwny.org/what-we-do/harbor-house-resource-center.html</a>
Harmonia Collaborative Care	<a href="https://harmonia-care.org/">https://harmonia-care.org/</a>
Haven House	<a href="https://cfsbny.org/our-services/hh/">https://cfsbny.org/our-services/hh/</a>
Help Me Grow WNY	<a href="https://helpmegrowny.org/">https://helpmegrowny.org/</a>
Hillside Children's Center	<a href="https://www.hillside.com/">https://www.hillside.com/</a>
Hospice Buffalo	<a href="https://www.hospicebuffalo.com/">https://www.hospicebuffalo.com/</a>
Horizon Health Services	<a href="http://www.horizon-health.org">www.horizon-health.org</a>
Horizon Health Family Support Services	<a href="https://www.horizon-health.org/services/outpatient/family-adolescent/">https://www.horizon-health.org/services/outpatient/family-adolescent/</a>
International Institute	<a href="https://iibuffalo.org/">https://iibuffalo.org/</a>
It Takes a Village	<a href="http://itavao.ml4developments.com/">http://itavao.ml4developments.com/</a>
Jewish Family Services	<a href="https://www.jfsbuffalo.org/">https://www.jfsbuffalo.org/</a>
Lancaster Youth Bureau	<a href="https://www.lancasterny.gov/departments/youth-bureau.html">https://www.lancasterny.gov/departments/youth-bureau.html</a>
Legal Aid Bureau of Buffalo	<a href="https://legalaiddbuffalo.org/">https://legalaiddbuffalo.org/</a>
Matt Urban Hope House	<a href="http://urbanctr.org/tag/hope-house/">http://urbanctr.org/tag/hope-house/</a>
Matt Urban Human Services	<a href="http://urbanctr.org/">http://urbanctr.org/</a>
Mental Health Advocates	<a href="https://mhawny.org/">https://mhawny.org/</a>
Mental Hygiene Legal Services	<a href="https://www.nycourts.gov/courts/ad4/mhls/">https://www.nycourts.gov/courts/ad4/mhls/</a>
Millard Filmore Suburban Hospital	<a href="https://www.kaleidahealth.org/suburban/services/display.asp?s=326">https://www.kaleidahealth.org/suburban/services/display.asp?s=326</a>
Monsignor Carr	<a href="https://www.ccwny.org/services/monsignor-carr-clinics">https://www.ccwny.org/services/monsignor-carr-clinics</a>
My Place Home	<a href="http://www.211wny.org/provider/8809/">http://www.211wny.org/provider/8809/</a>
Narcotics Anonymous (NA)	<a href="https://www.nawny.org/find-a-meeting">https://www.nawny.org/find-a-meeting</a>
Narins Eating Disorder Center	<a href="https://www.narinsedc.com/">https://www.narinsedc.com/</a>
National Alliance on Mental Illness (NAMI)	<a href="https://www.namibuffalony.org/">https://www.namibuffalony.org/</a>
Native American Community Services (NACS)	<a href="http://www.nacswny.org/index.html">http://www.nacswny.org/index.html</a>
Neighborhood Legal Services	<a href="https://nls.org/">https://nls.org/</a>
New Directions	<a href="https://fosteringgood.org/">https://fosteringgood.org/</a>
Northpointe Council	<a href="http://www.northpointecouncil.org">www.northpointecouncil.org</a>
Northwest Community Health Center	<a href="https://nhcwny.org/">https://nhcwny.org/</a>
NYS Division of Criminal Justice Services (DCJS)	<a href="https://www.criminaljustice.ny.gov/">https://www.criminaljustice.ny.gov/</a>
NYS Domestic & Sexual Violence Hotlines	<a href="https://opdv.ny.gov/help/dvhotlines.html">https://opdv.ny.gov/help/dvhotlines.html</a>
Office of Victim's Services (OVS)	<a href="https://ovs.ny.gov/">https://ovs.ny.gov/</a>
OISHEI Children's Hospital	<a href="http://Care&amp;Treatment JohnR.OisheiChildren'sHospitalofBuffalo(ochbuffalo.org)">Care &amp; Treatment   John R. Oishei Children's Hospital of Buffalo (ochbuffalo.org)</a>
OLV Human Services	<a href="http://www.olvhumanservices.org">www.olvhumanservices.org</a>
Orchard Park Youth Bureau	<a href="https://www.orchardparkny.org/committees/youth-board/">https://www.orchardparkny.org/committees/youth-board/</a>
Pathways - Buffalo - Sisters Hospital	<a href="https://www.chsbuffalo.org/locations/pathways-buffalo">https://www.chsbuffalo.org/locations/pathways-buffalo</a>
People Against Trafficking Humans (PATH)	<a href="https://pathofwny.org">https://pathofwny.org</a>
PreventionFocus	<a href="http://preventionfocus.org/">http://preventionfocus.org/</a>
Project Mona's House	<a href="http://www.projectmonashouse.com">www.projectmonashouse.com</a>
Prevention Council of Erie County (formerly ECCPASA)	<a href="https://thepreventioncouncilec.org/">https://thepreventioncouncilec.org/</a>
Problem Gambling Resource Center	<a href="http://www.NYProblemGamblingHELP.org/Western">www.NYProblemGamblingHELP.org/Western</a>
Recovery Options Made Easy (ROME)	<a href="http://www.recoveryoptionsny.org">www.recoveryoptionsny.org</a>
Renaissance Addiction Services (RAS)	<a href="https://ked.org/">https://ked.org/</a>
Restoration Society Inc. (RSI)	<a href="https://rsiwny.org/">https://rsiwny.org/</a>
Salvation Army	<a href="https://easternusa.salvationarmy.org/empire/provide-housing/">https://easternusa.salvationarmy.org/empire/provide-housing/</a>
Salvation Army Emergency Shelter	<a href="https://buffalo.salvationarmy.org/BufaloNY/Emergency_Shelter">https://buffalo.salvationarmy.org/BufaloNY/Emergency_Shelter</a>
Save the Michaels	<a href="https://savethemichaels.org/">https://savethemichaels.org/</a>
Saving Grace Ministries	<a href="http://www.sgmworld.org/">http://www.sgmworld.org/</a>
Sexaholics Anonymous (SA)	<a href="http://www.sabuffalo.org/">http://www.sabuffalo.org/</a>
Say YES Buffalo	<a href="https://sayyesbuffalo.org/">https://sayyesbuffalo.org/</a>
Sisters Hospital	<a href="https://www.chsbuffalo.org/sisters-charity-hospital">https://www.chsbuffalo.org/sisters-charity-hospital</a>
Sisters Hospital - Pathways Program	<a href="https://www.chsbuffalo.org/locations/pathways-buffalo">https://www.chsbuffalo.org/locations/pathways-buffalo</a>
Sisters Hospital - Spiritual Care	<a href="https://www.chsbuffalo.org/services/spiritual-care">https://www.chsbuffalo.org/services/spiritual-care</a>
Southwest Keys	<a href="https://southwestkey.org/">https://southwestkey.org/</a>
Spectrum Human Services	<a href="https://www.shswny.org/">https://www.shswny.org/</a>
Stop the Violence Coalition	<a href="https://www.facebook.com/stoptheviolencecoalition.5">https://www.facebook.com/stoptheviolencecoalition.5</a>
Stutzman ATC (ages 17 and up)	<a href="https://oasas.ny.gov/location/margaret-stutzman-addiction-treatment-center">https://oasas.ny.gov/location/margaret-stutzman-addiction-treatment-center</a>
Suicide Prevention & Crisis Hotline	<a href="https://suicidepreventionlifeline.org/">https://suicidepreventionlifeline.org/</a>
The FREETHEM Center (Project Mona's House)	<a href="http://www.projectmonashouse.com">www.projectmonashouse.com</a>
Trans Lifeline	<a href="https://translifeline.org">https://translifeline.org</a>
Transitional Services (TSI)	<a href="http://www.tsiwny.org">www.tsiwny.org</a>
TRY Program (Teaching and Restoring Youth)	<a href="https://www.tryprogram.org/our-history.html">https://www.tryprogram.org/our-history.html</a>
UB Family Law Clinic	<a href="https://www.law.buffalo.edu/beyond/clinics/domestic-violence.html">https://www.law.buffalo.edu/beyond/clinics/domestic-violence.html</a>
Volunteer Lawyers Project	<a href="https://ecbavlp.com/">https://ecbavlp.com/</a>
Volunteer Lawyers Project Immigration Program	<a href="http://www.ecbavlp.com/immigration">www.ecbavlp.com/immigration</a>
West Side Community Services	<a href="http://wscsbuffalo.org/">http://wscsbuffalo.org/</a>
WNY Anti-Violence Project	<a href="http://www.wnyavp.org">www.wnyavp.org</a>
WNY Center for Survivors of Torture	<a href="https://www.jfsbuffalo.org/services/wny-center-for-survivors-of-torture/">https://www.jfsbuffalo.org/services/wny-center-for-survivors-of-torture/</a>
WNYCPC Children's Psychiatric Center (ages 5-17)	<a href="https://omh.ny.gov/omhweb/facilities/wcpc/">https://omh.ny.gov/omhweb/facilities/wcpc/</a>
WNY Independent Living (WNYL)	<a href="http://www.wnyil.org/mental-health-peer-connection">www.wnyil.org/mental-health-peer-connection</a>
WNY United Against Drug & Alcohol Abuse	<a href="http://www.wnyunited.org">www.wnyunited.org</a>
Young Women's Christian Association (YWCA)	<a href="https://ywca-wny.org/programs/housing-services/">https://ywca-wny.org/programs/housing-services/</a>
Young Peers at WNYIL	<a href="http://wnyyoungpeers.org">http://wnyyoungpeers.org</a>

# Erie County Youth Behavioral Health & Related Systems of Care Map

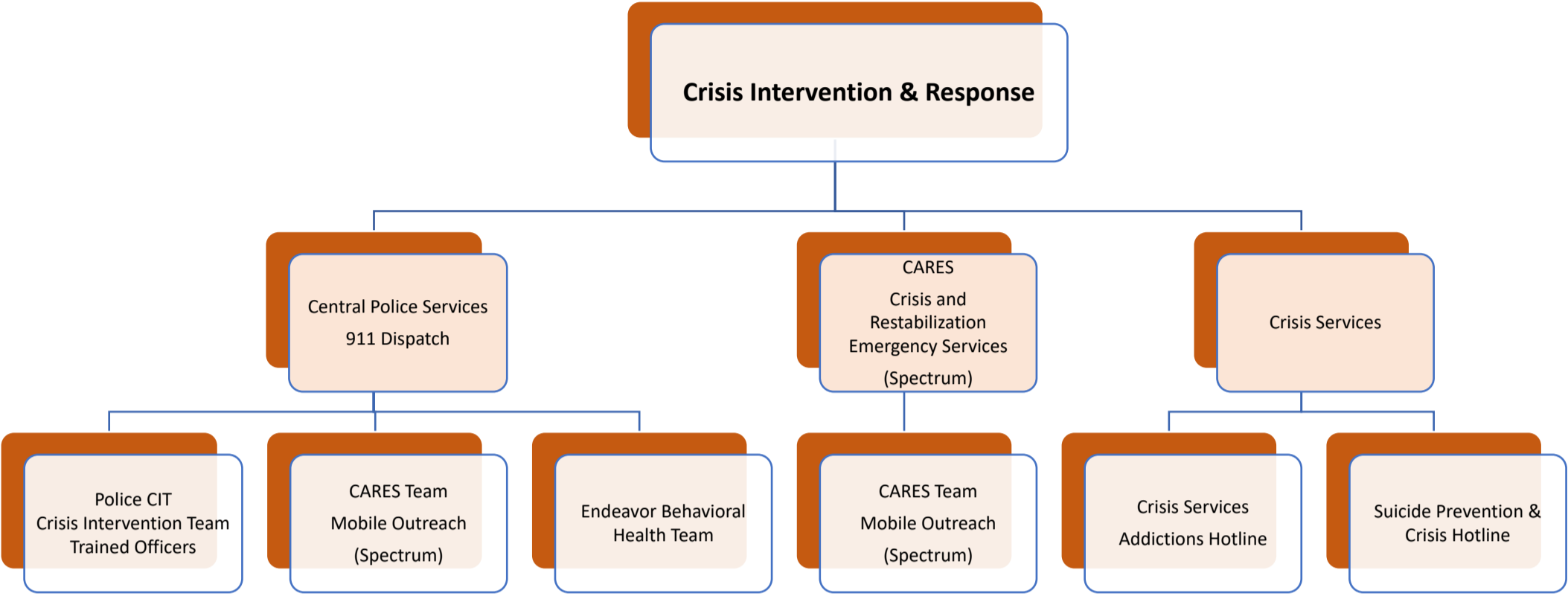


# Erie County Youth Behavioral Health & Related Systems of Care Map



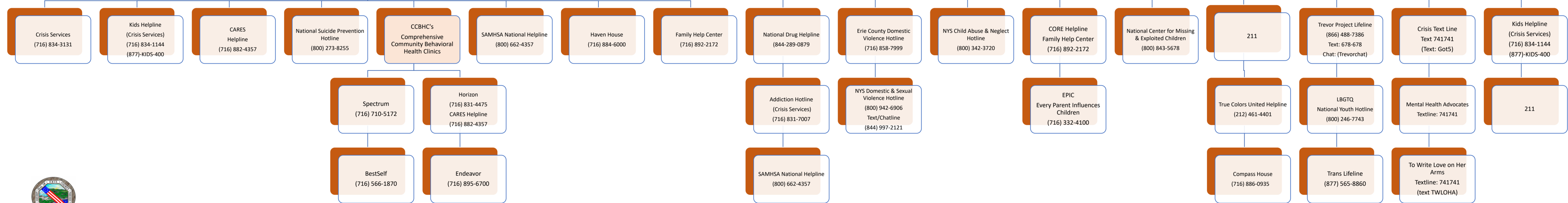
Erie County  
Department of Mental Health

# Erie County Youth Behavioral Health & Related Systems of Care Map

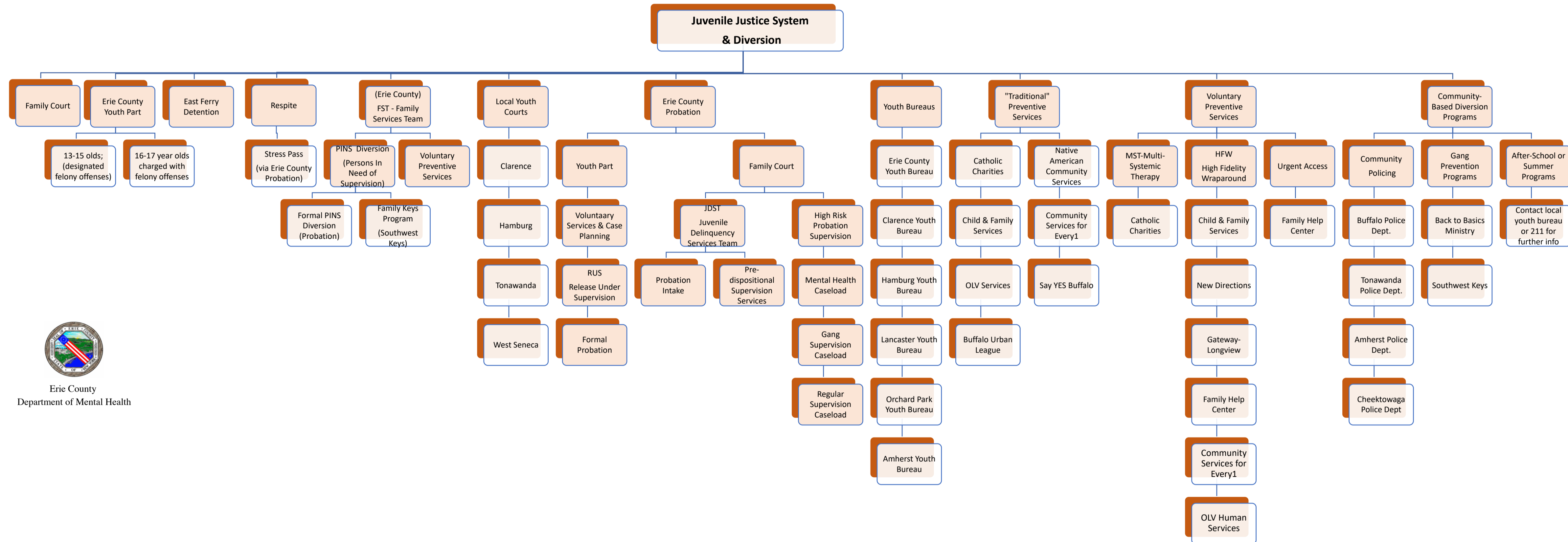


Erie County  
Department of Mental Health

**Hotlines/Crisis Lines/Warmlines**



# Erie County Youth Behavioral Health & Related Systems of Care Map

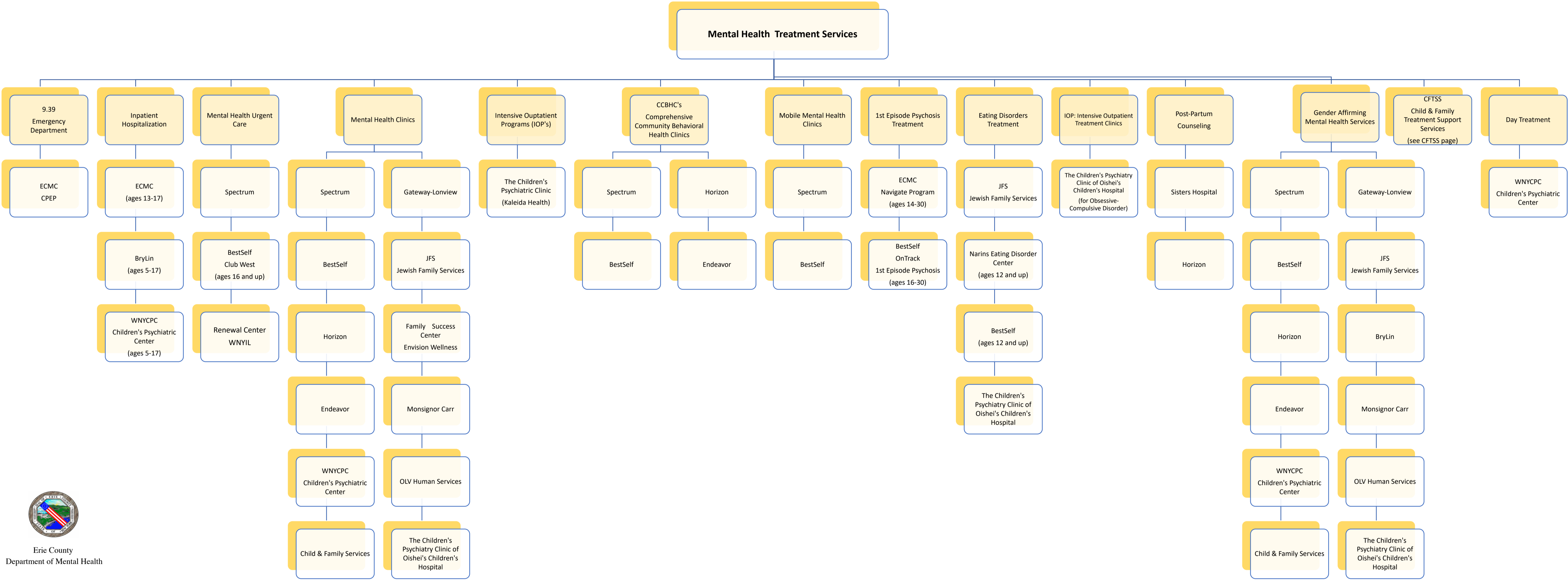


Erie County  
Department of Mental Health

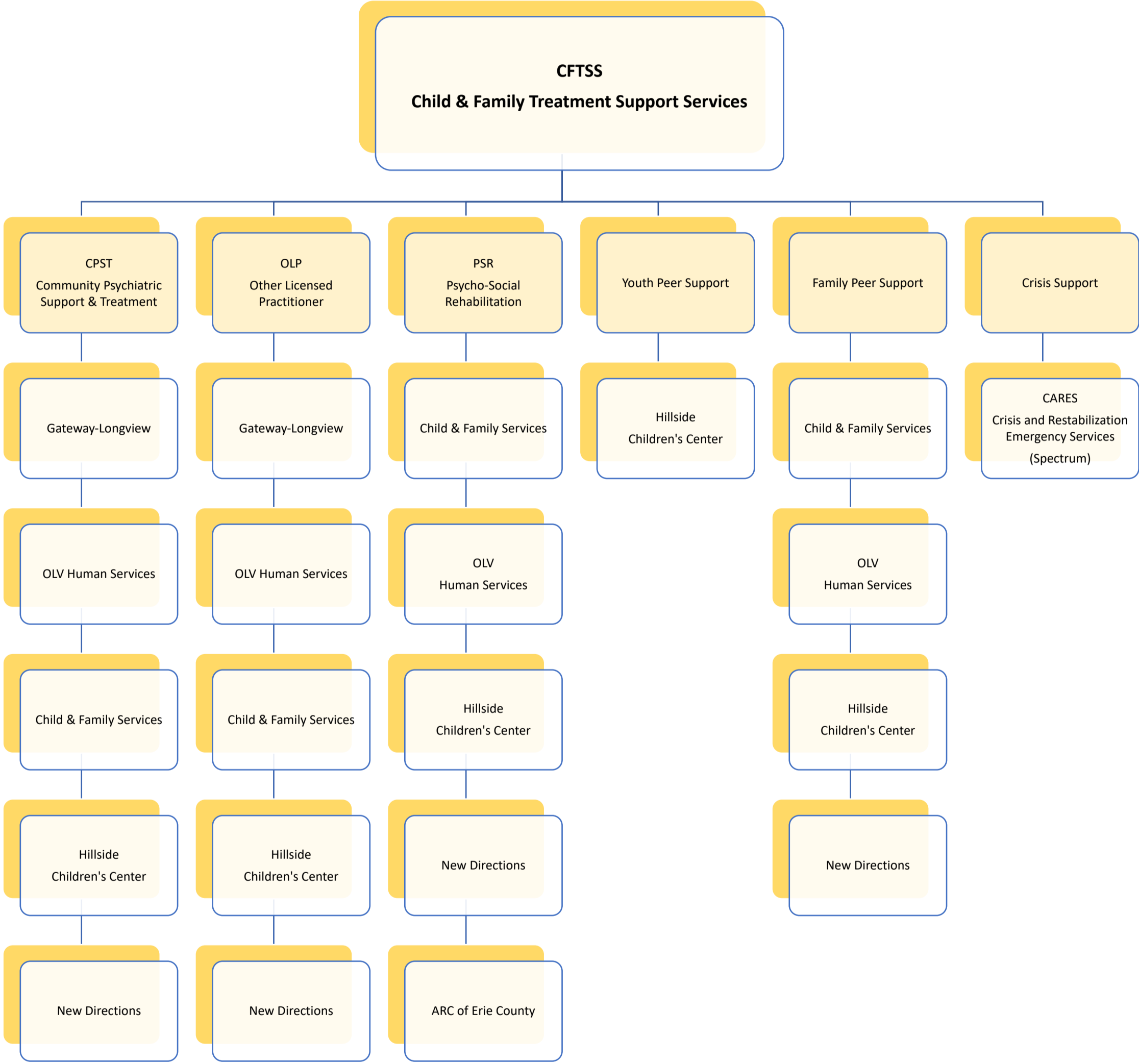
Erie County  
Youth Behavioral Health &  
Related Systems of Care Map



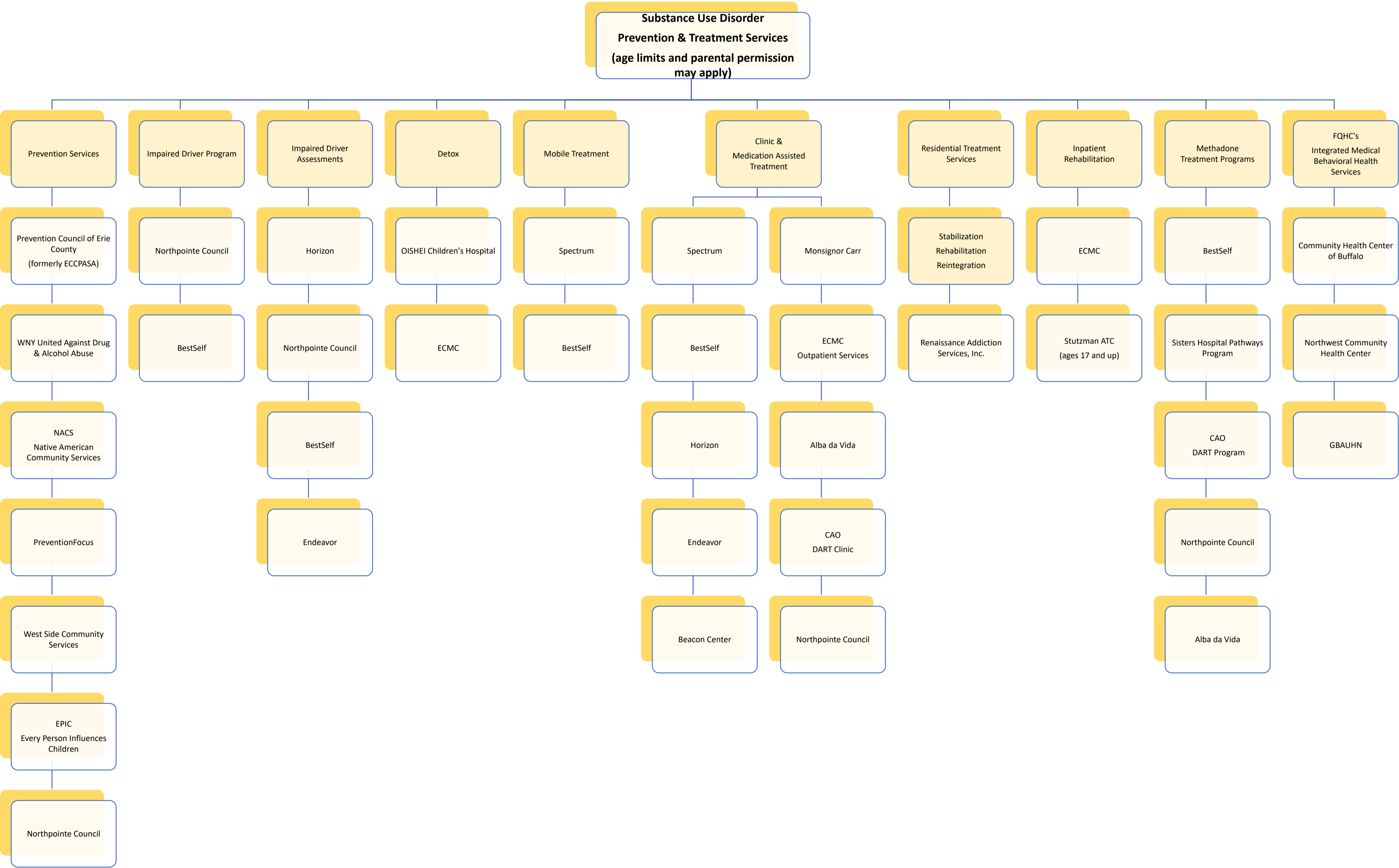
Erie County  
Youth Behavioral Health &  
Related Systems of Care Map



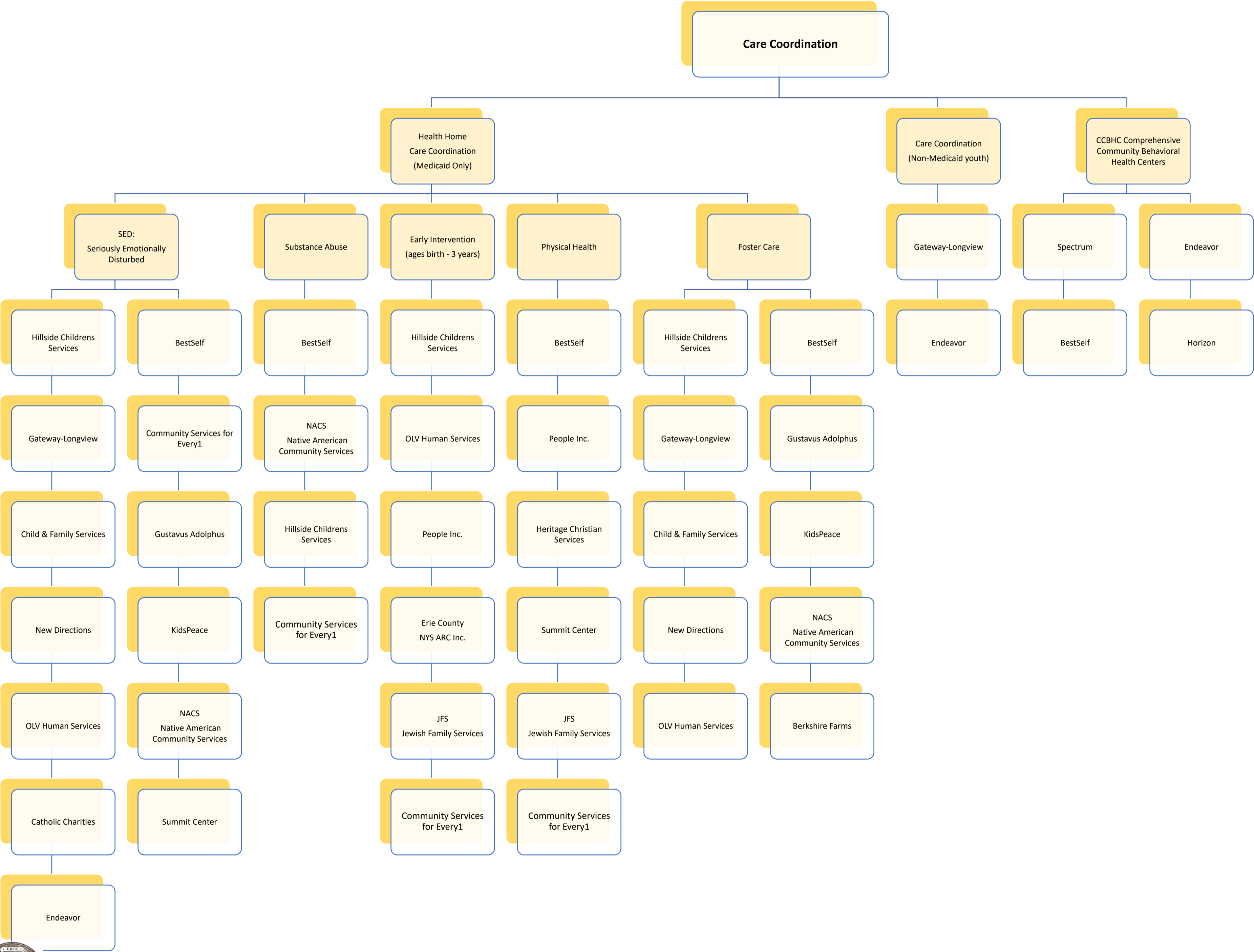
Erie County  
Youth Behavioral Health &  
Related Systems of Care Map



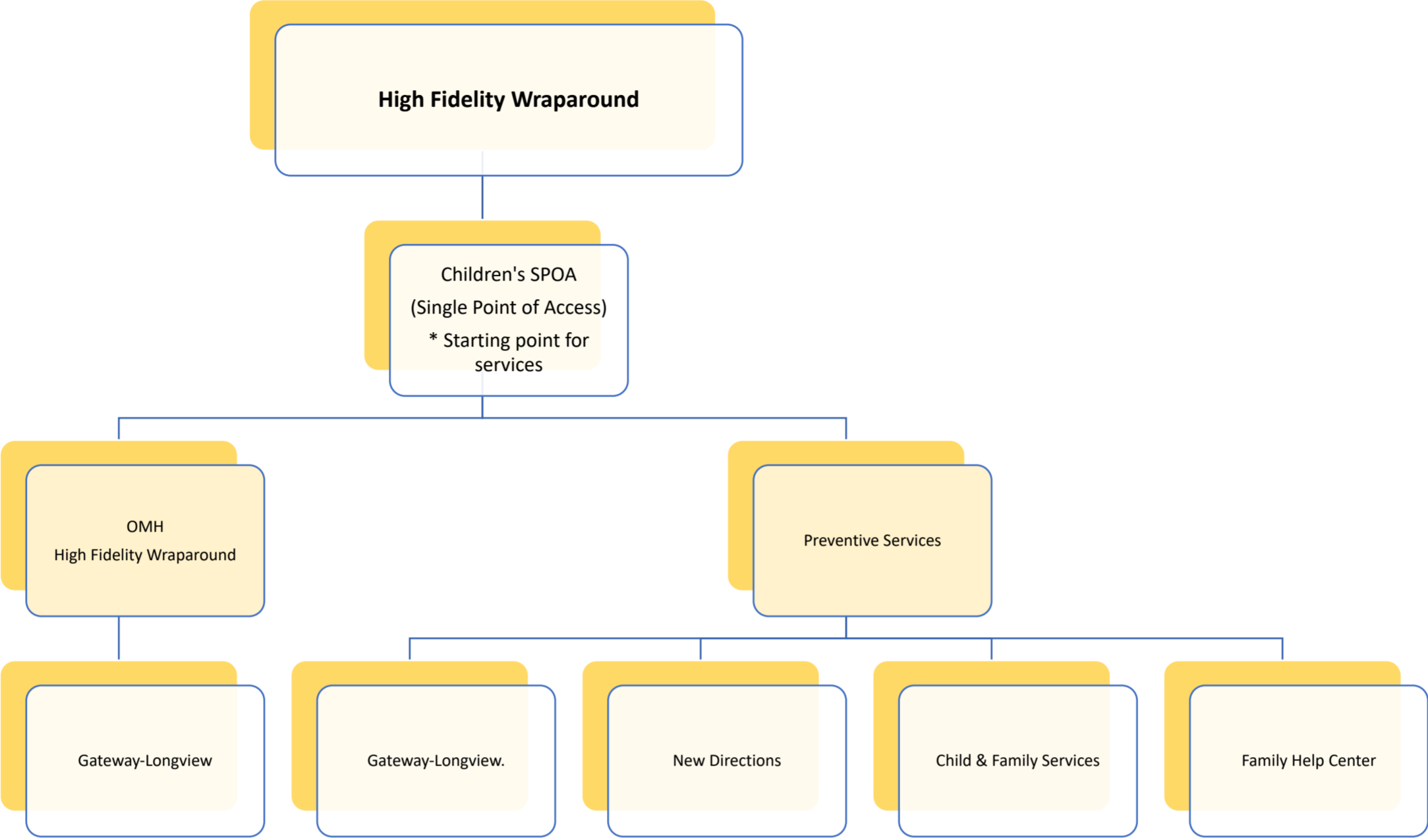
Erie County  
Youth Behavioral Health &  
Related Systems of Care Map



Erie County  
Youth Behavioral Health &  
Related Systems of Care Map

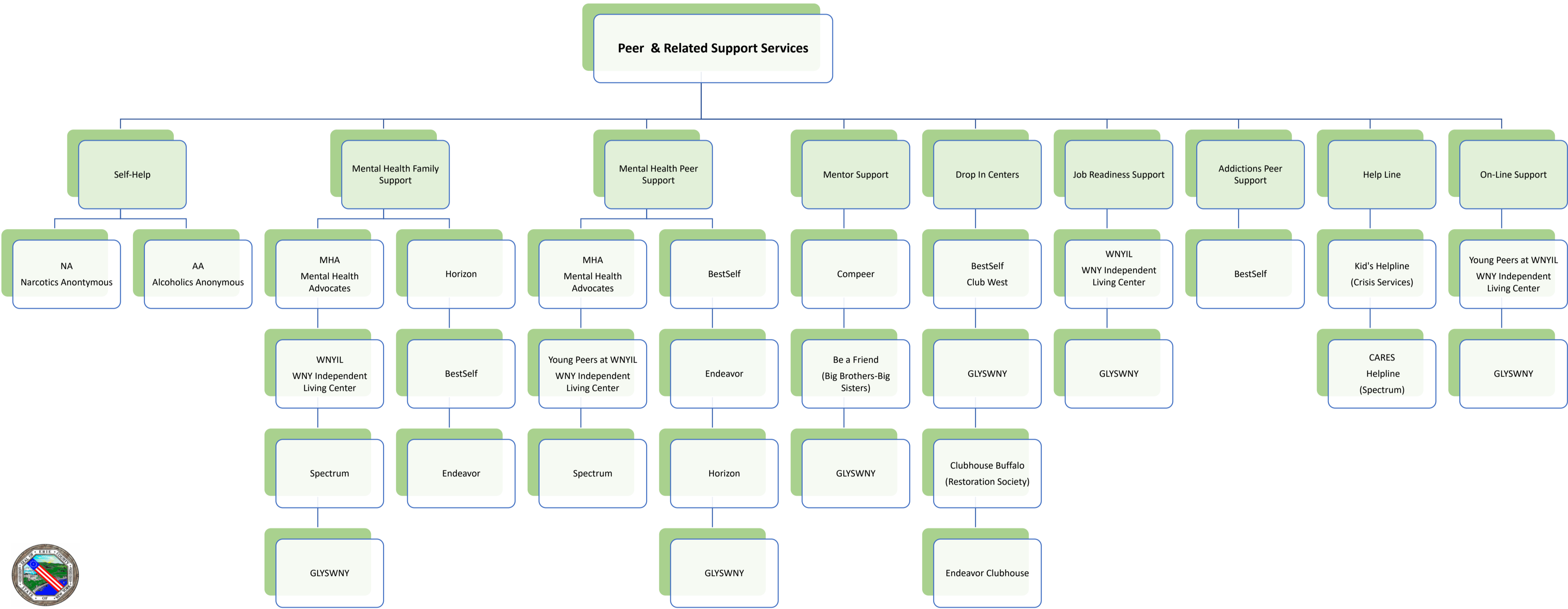


Erie County  
Youth Behavioral Health &  
Related Systems of Care Map

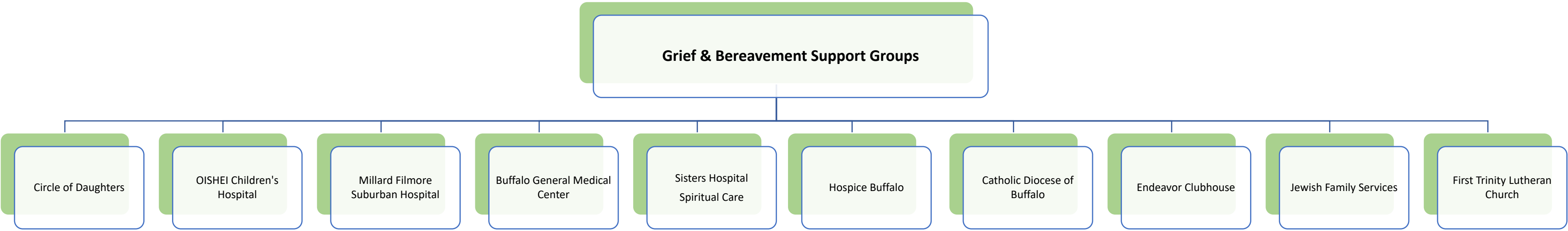


Erie County  
Department of Mental Health

# Erie County Youth Behavioral Health & Related Systems of Care Map

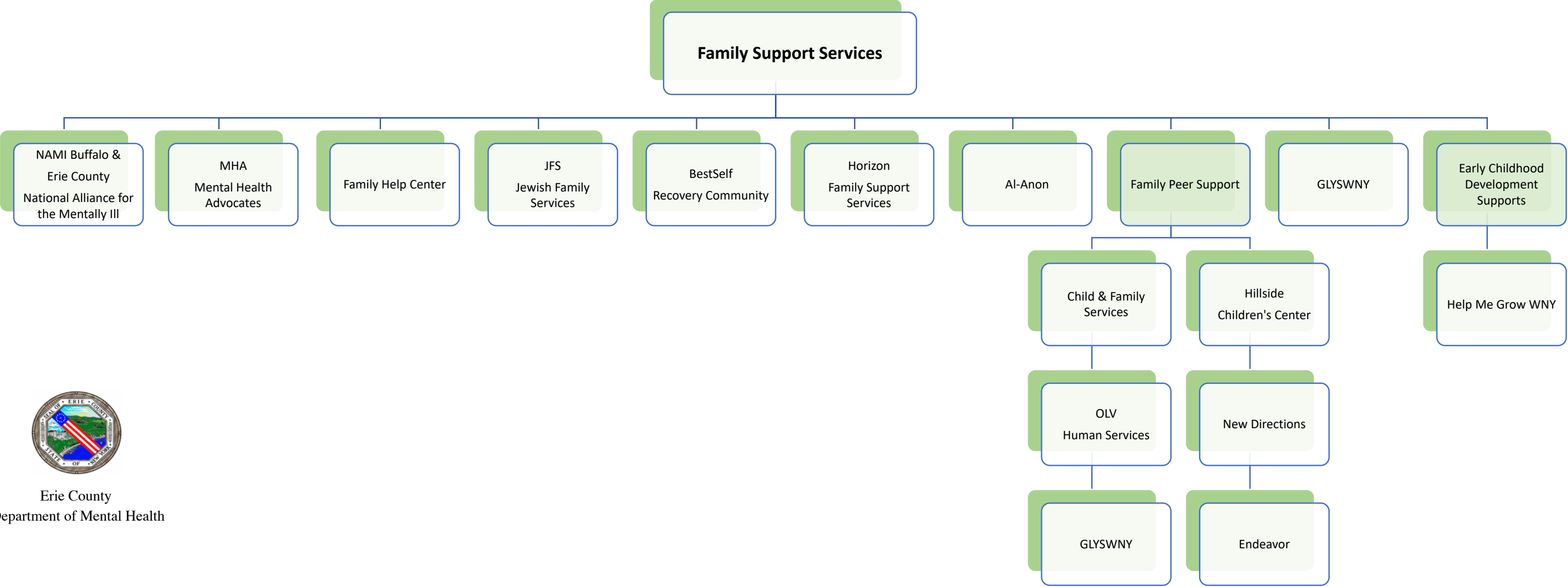


Erie County  
Youth Behavioral Health &  
Related Systems of Care Map



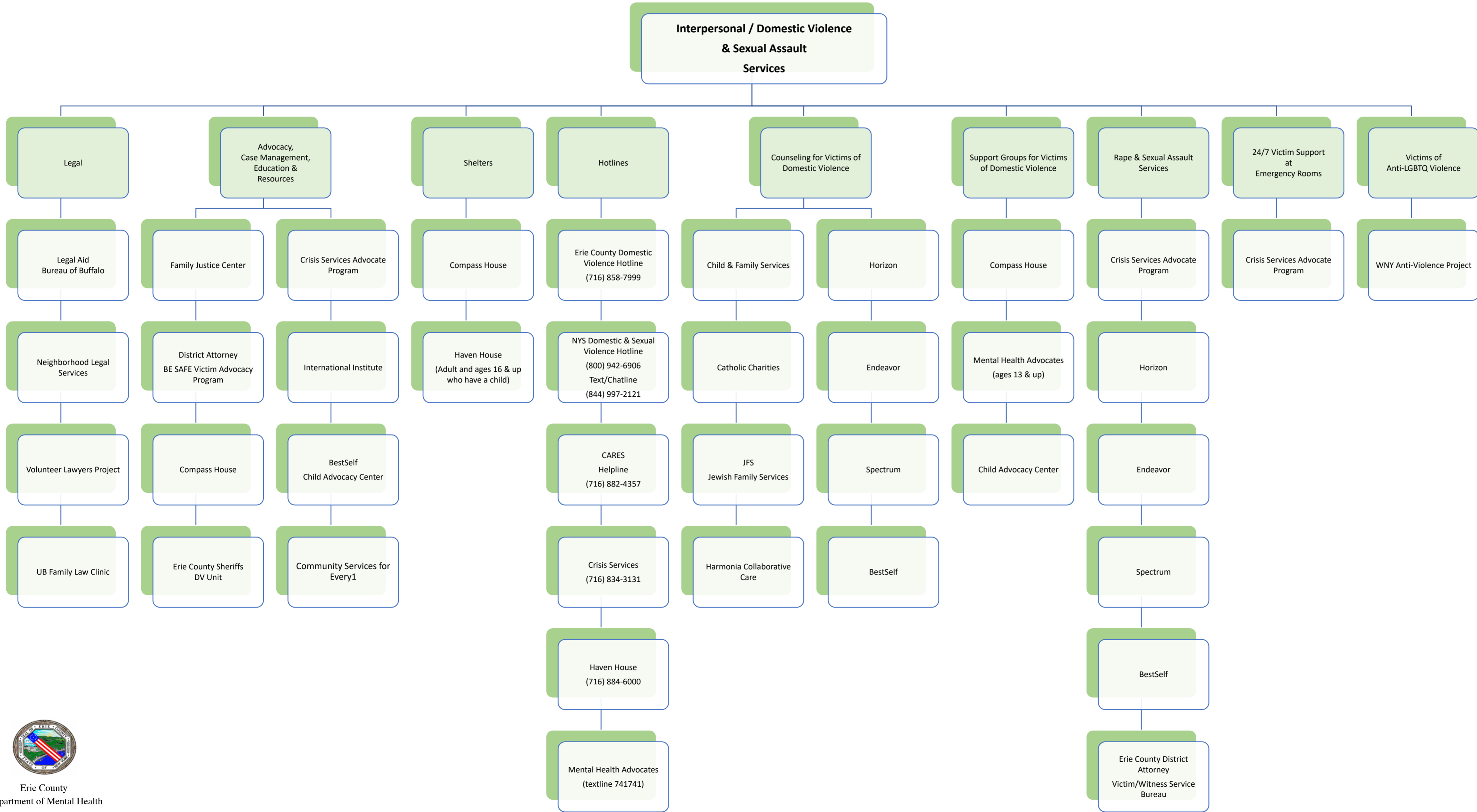
Erie County  
Department of Mental Health

# Erie County Youth Behavioral Health & Related Systems of Care Map

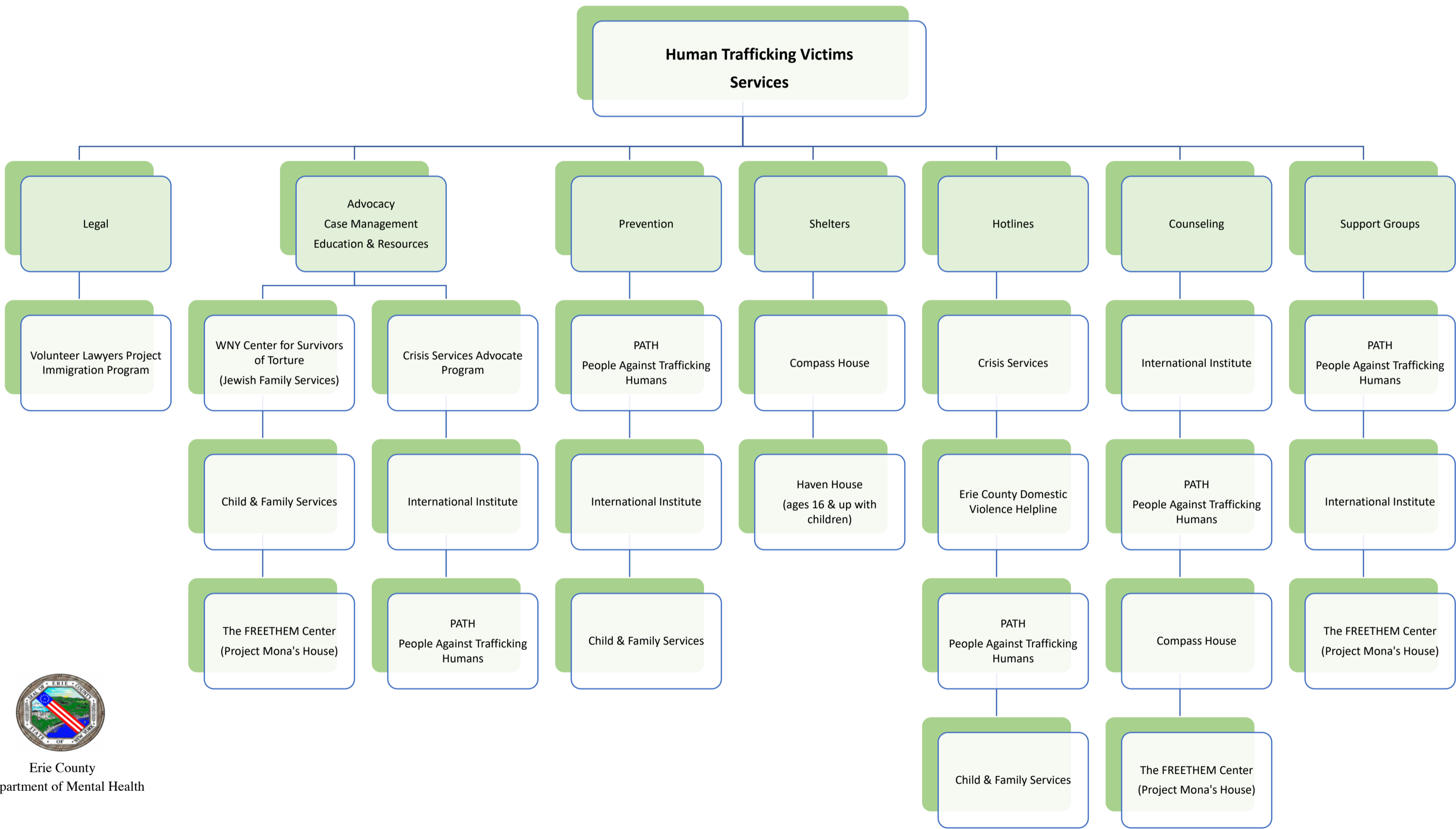


Erie County  
Department of Mental Health

Erie County  
Youth Behavioral Health &  
Related Systems of Care Map



Erie County  
Youth Behavioral Health &  
Related Systems of Care Map



Erie County  
Youth Behavioral Health &  
Related Systems of Care Map

